

## 1. Install the Software

Install the **Supervisor** software from USB stick or download the latest version from

<http://livenoise.net/install/>

The **Supervisor** software is needed. The **Reporter** software can be installed at the same time or later if required.

Windows Firewall may block the software's ability to communicate with the noise monitors or the Internet. If asked, please select the option to **Allow Access**. More information in the **User Manual**.

## 3. WiFi Configuration (Skip if using wired Ethernet)

The noise monitor's WiFi configuration is set using a USB memory stick.

Run the **Supervisor** software and select the **System | Device Setup | Create Memory Stick** option from the menu.

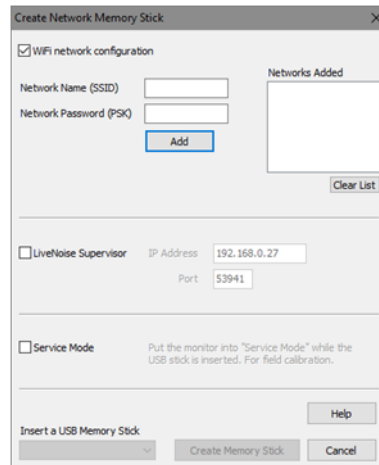
Select the **WiFi network configuration** option.

Enter the name and password, and click **[Add]** for each network that your monitor(s) may connect to.

Click the **LiveNoise Supervisor** option.

Insert a memory stick and click the **[Create Memory Stick]** button.

Insert the memory stick into each of your noise monitors. The monitor's display should blink off after two or three seconds to indicate that the memory stick has been read. You can now remove the memory stick.



## 2. Install Noise Monitor(s)

Designed to be wall mounted using four screws, within 10m (32ft) of an indoor power outlet, and with good WiFi signal

To access the mounting screw holes, remove the front panel by undoing the four screws.

Replace the front panel and plug in to power up the monitor. You should see the sound level on the monitor's display.



## 4. Check Connection to Supervisor

Within about 30 seconds of WiFi configuration, the noise monitors should connect.

If not, you can tell **Supervisor** to search for noise monitors on the network from the **System | Device Setup | Find New Monitors** menu option.

For more information about connecting new monitors please refer to the **User Manual** or online support.

## General Information

Email: [info@noisemeters.com](mailto:info@noisemeters.com)

Web: [www.noisemeters.com](http://www.noisemeters.com)

## Technical Support

Email: [support@noisemeters.com](mailto:support@noisemeters.com)

Web: [support.noisemeters.com](http://support.noisemeters.com)