

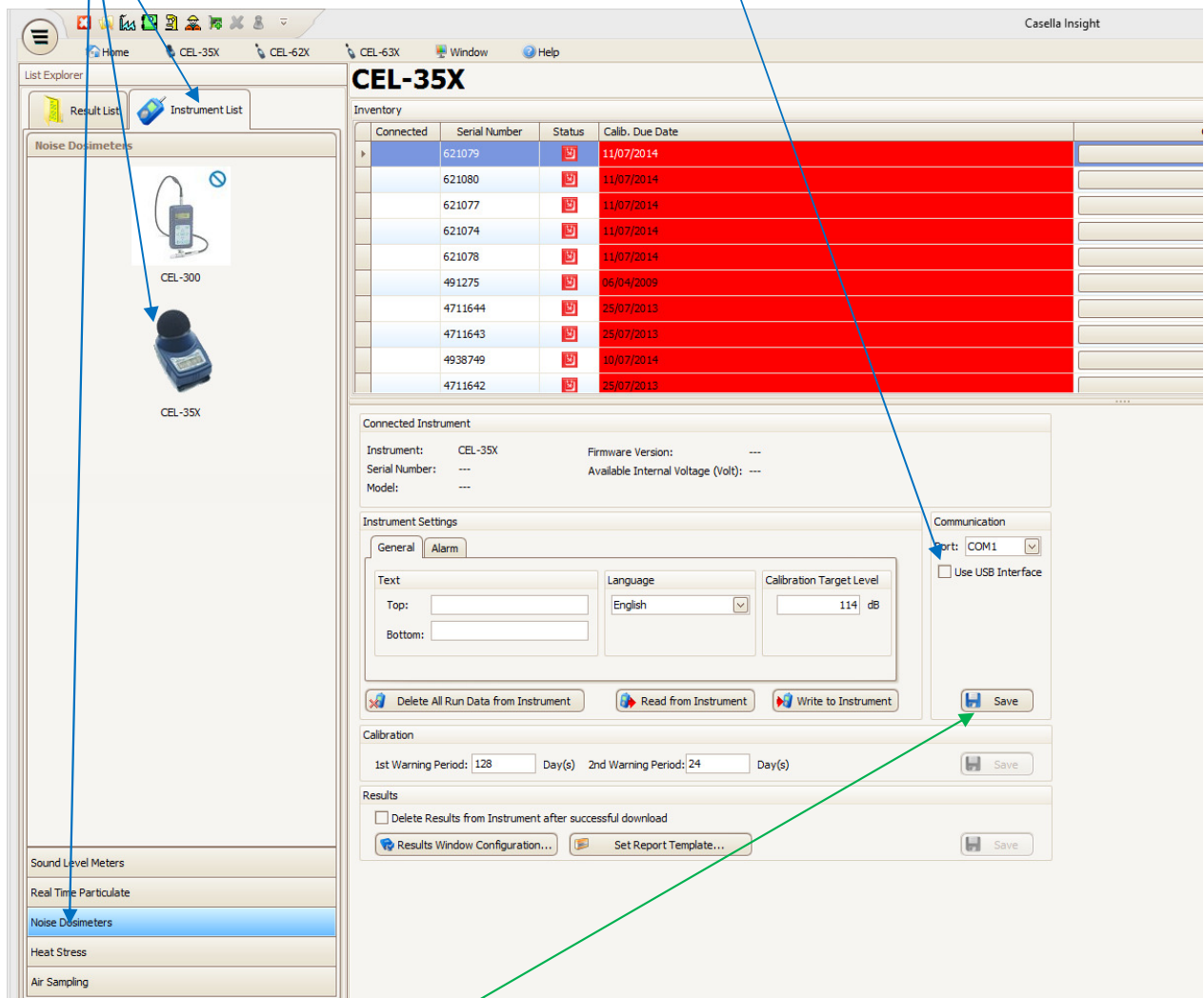
How to stop the 'Apex/ Tuff- Casella IR Interface not found' and 'CEL-35x- Casella IR Interface not found' pop up windows if you don't use those instruments but have installed the 'Plug ins'

If either of the following windows appear each time you start Insight and you don't use these modules the following fix will prevent these windows popping up.



1 Select Instrument (CEL- 35x) from Noise Dosimeter or (Tuff Pump) from Air Sampling

2 Uncheck the 'Use USB Interface' box in the 'Communication' section



3 Click on the 'Save' button.