

Overview of Insight Software

Insight data management software provides Health & Safety and Environmental professionals with a more advanced solution for downloading, managing and reporting data for a variety of occupational and environmental applications.

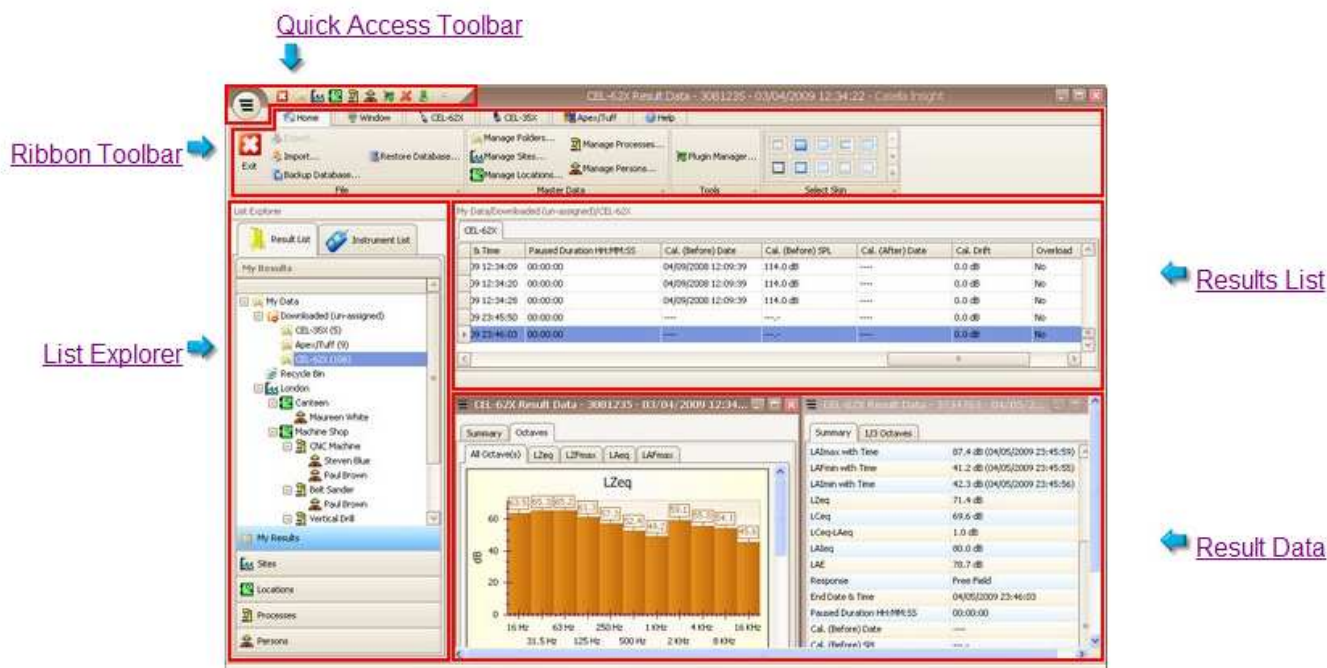
Rather than using several software applications to download from many instruments, Insight allows data to be downloaded and stored into one versatile package. This means that only one application has to be learnt!

Data is stored on a centralised database which may be managed by Site, Location, Process or Person. Data can be viewed in tabular or graphical format and analysed as necessary. Uniquely, reports can be

User Interface

The user interface is similar to that of an email browser such as Outlook. There is a directory structure on the left hand side arranged in folders followed by a list of measurements on the upper right hand side. Once you double click on one of these measurements in the results list you can more detail from the measurement in the lower right hand side window.

There is also a Quick Access Toolbar at the very top of the interface allowing you to quickly select different command or navigation activities.



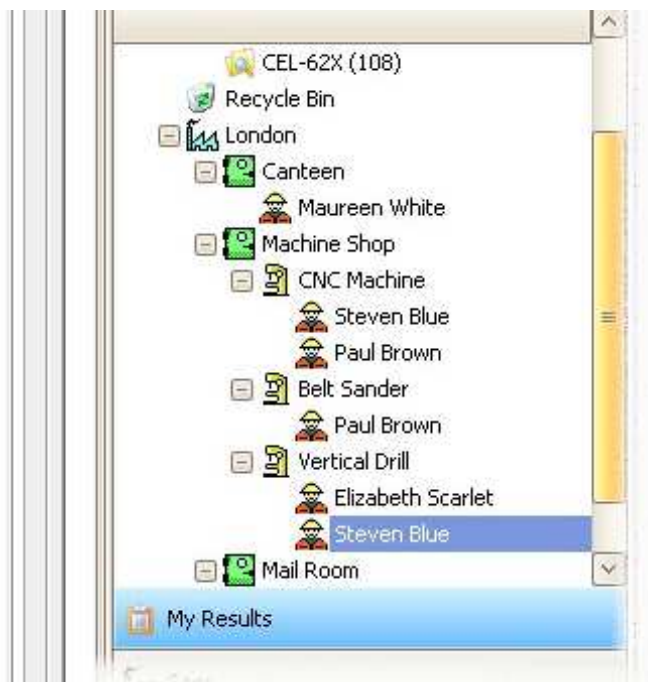
As with any Software package you need to spend a little time to familiarise yourself with the various options.

Tree View

The presentation of Data is based around a user generated tree view (uses a similar principle to Windows Explorer)

Each branch of the tree can be one of a selection of pre-defined branch types:

- Folder
- Site
- Location
- Process
- Person



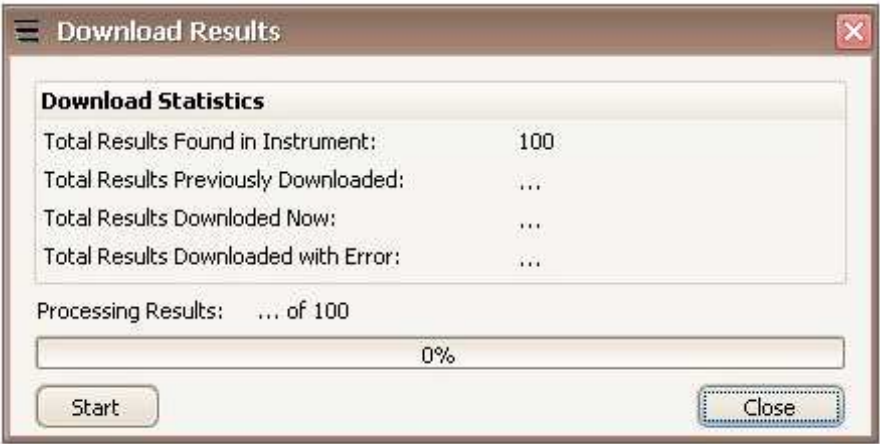
See appendix 1 for more information on how to add your own Site / Location etc

Downloading from the Instrument

Start up the Insight software and then switch on your CEL63x instrument. Connect the USB cable to the instrument and then the other end into a USB connector on your PC or Laptop.

The download process will begin automatically once the instrument is recognised by the Insight software.

Once Insight has detected the instrument the following dialogue box will appear displaying how many results are available within Instrument currently connected to your PC.

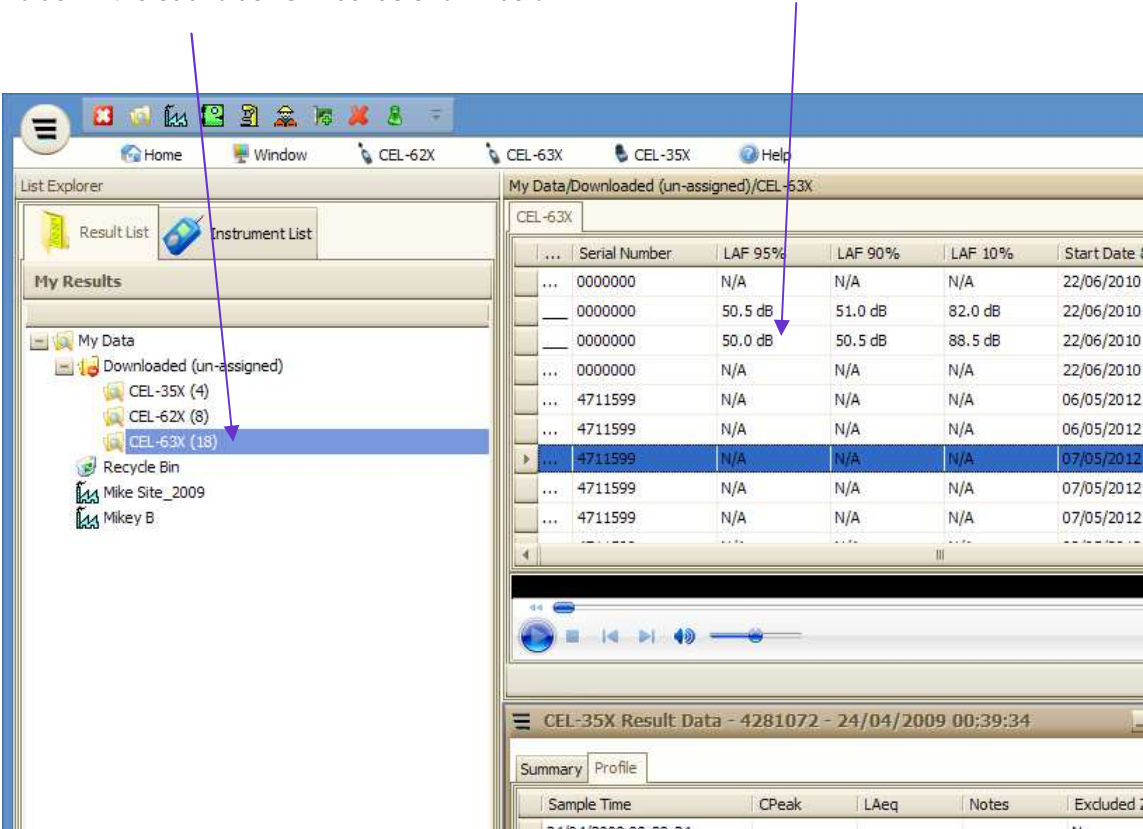


Press Start to begin downloading . Once the download is complete press the Close button.

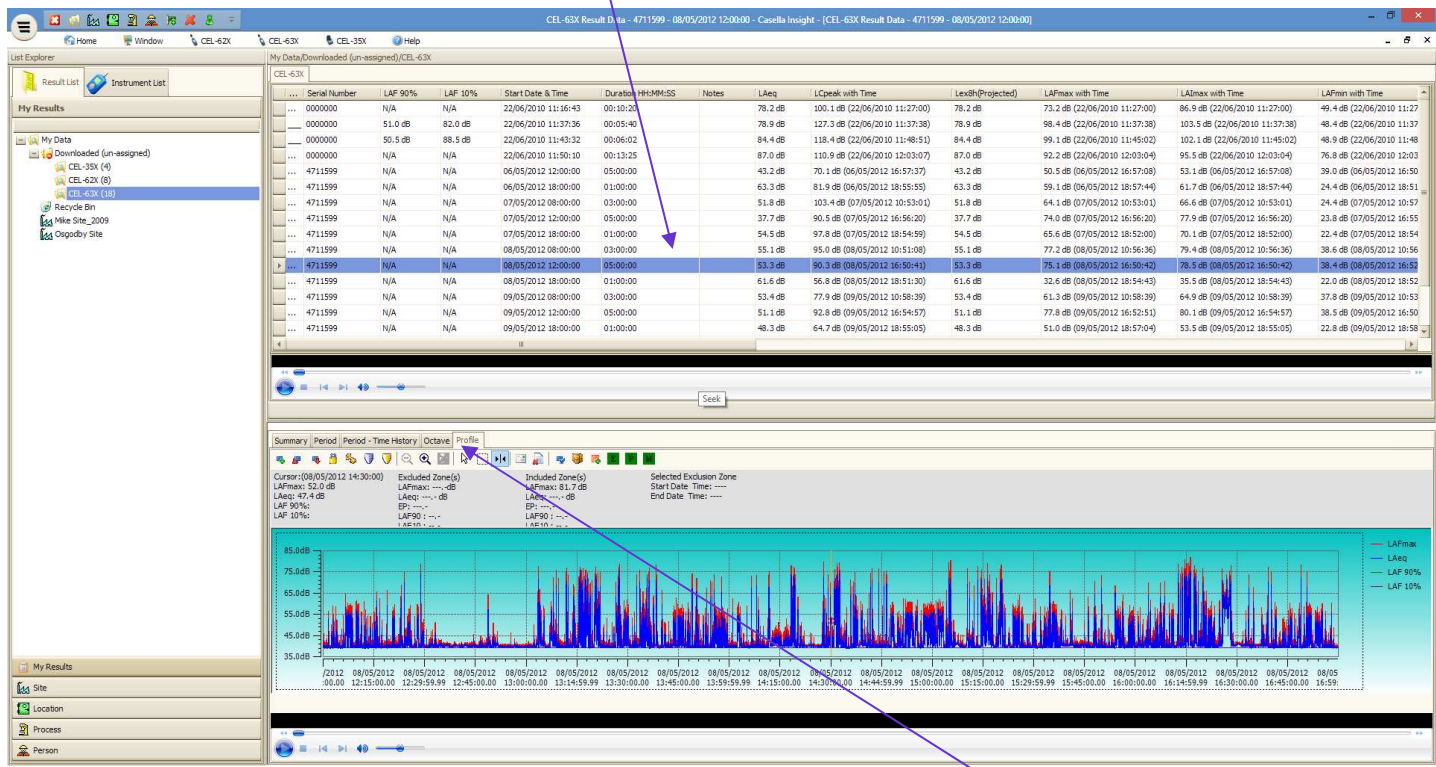
Viewing Measurements

Newly downloaded data will be displayed in the tree view in the “Downloaded (un-assigned) ” folder in the sub folder CEL63xas shown below.

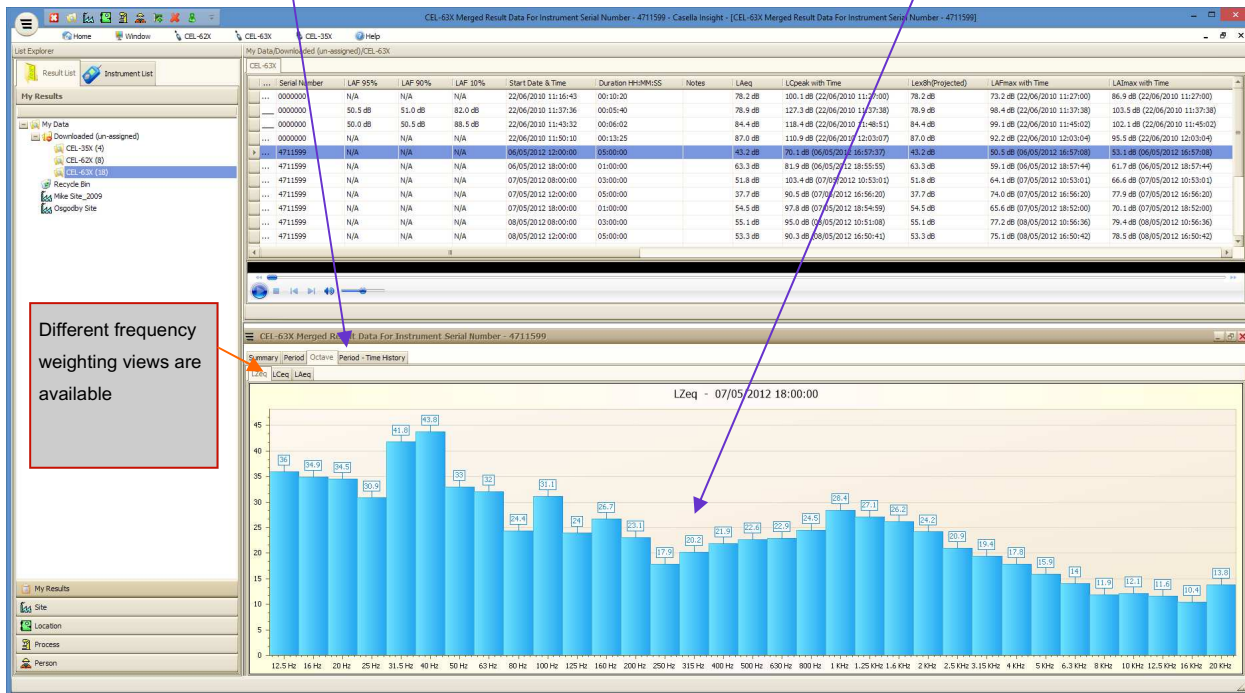
Click on this folder to get the measurement results list window on the right hand side of



The measurement (row) currently selected (blue) can be double left-clicked with your mouse to get more measurement detail in the “Result Data ” window.



There are a number of choices to view in the “Result Data ” window by selecting from the available TABS. A simple summary of the measurement or 1:1 or 1:3 Octave Band Data results (if your instrument measures these parameters). In the example above a ‘time history profile ’ of a single measurement is shown. Simply click on the Tabs to get alternative data. Below shows the 1:3 Octave Bands view for key parameters.



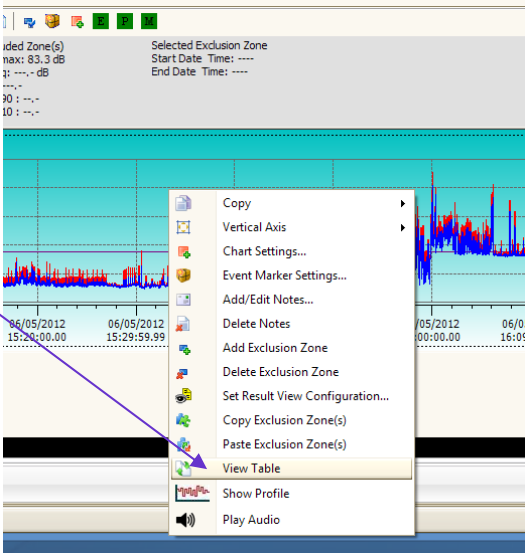
Exporting data to other applications

Tabular Data

By right clicking with your mouse over the graph area you can select 'View Table' .

There are also the option to change the Result View configuration (which parameters are displayed), the Chart Settings (colours of background, graph / parameters, vertical range resolution, Add Event Markers or to add Notes to the Graph etc.

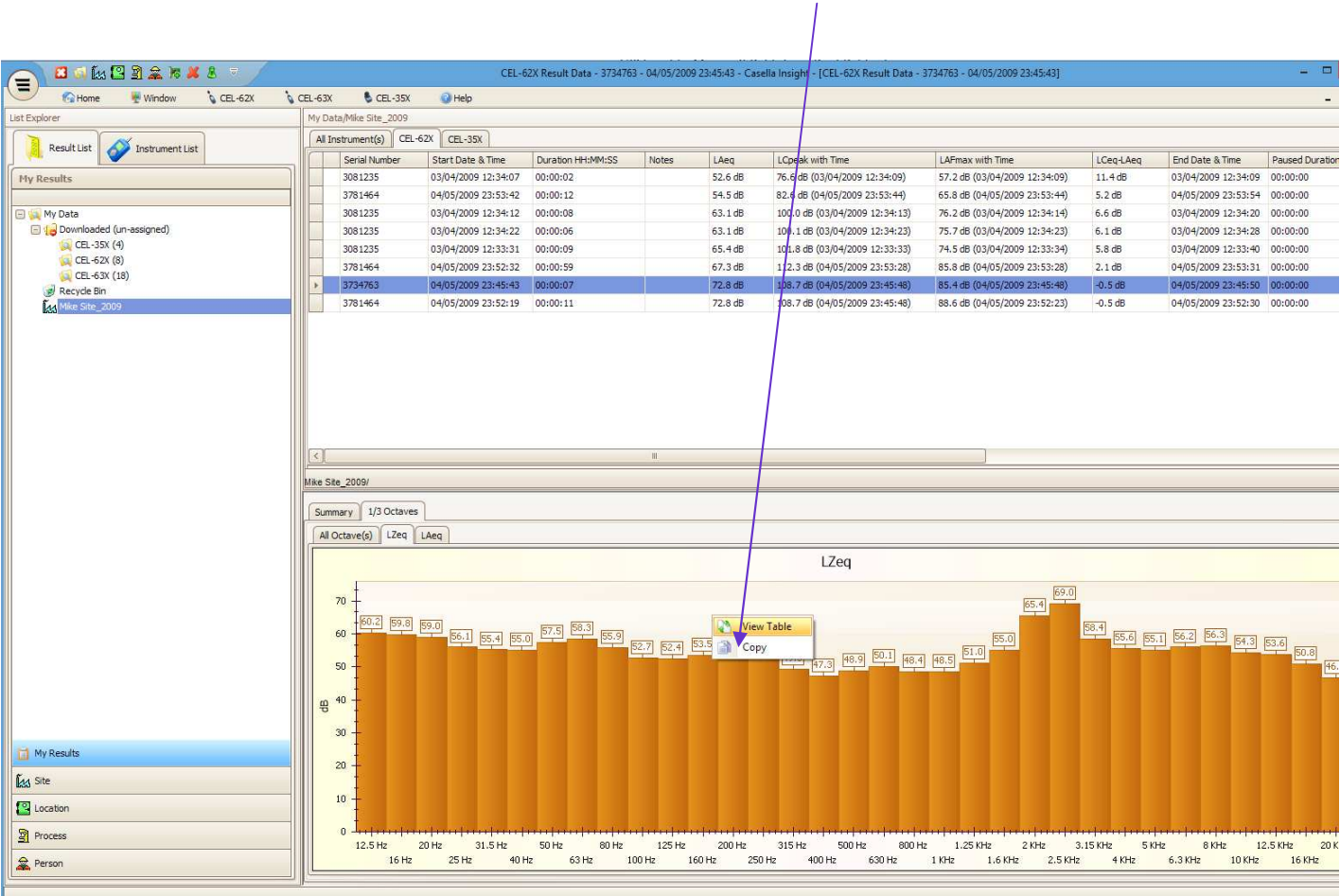
If you have opted to change the view to Table you would get a table similar to below (with whichever parameters you have selected) To export to a spreadsheet simply right click over any row and select 'Copy' . Then just paste to your spreadsheet and the entire table will be exported to your spreadsheet.



| SAMPLETIME | LAFmax | LAFeq | LAF 90% | LAF 10% | Notes |
|---------------------|---------|---------|---------|---------|-------|
| 08/05/2012 12:00:00 | 39.7 dB | 39.2 dB | | | |
| 08/05/2012 12:00:01 | 42.9 dB | 40.7 dB | | | |
| 08/05/2012 12:00:02 | 40.3 dB | 39.2 dB | | | |
| 08/05/2012 12:00:03 | 39.9 dB | 39.2 dB | | | |
| 08/05/2012 12:00:04 | 39.9 dB | 39.4 dB | | | |
| 08/05/2012 12:00:05 | 39.9 dB | 39.3 dB | | | |
| 08/05/2012 12:00:06 | 40.0 dB | 39.4 | | | |
| 08/05/2012 12:00:07 | 40.9 dB | 39.8 | | | |
| 08/05/2012 12:00:08 | 39.8 dB | 39.2 dB | | | |
| 08/05/2012 12:00:09 | 39.8 dB | 39.1 dB | | | |
| 08/05/2012 12:00:10 | 39.7 dB | 39.2 dB | | | |
| 08/05/2012 12:00:11 | 39.9 dB | 39.4 dB | | | |
| 08/05/2012 12:00:12 | 40.0 dB | 39.3 dB | | | |
| 08/05/2012 12:00:13 | 39.7 dB | 39.1 dB | | | |
| 08/05/2012 12:00:14 | 40.0 dB | 39.2 dB | | | |
| 08/05/2012 12:00:15 | 46.0 dB | 42.8 dB | | | |

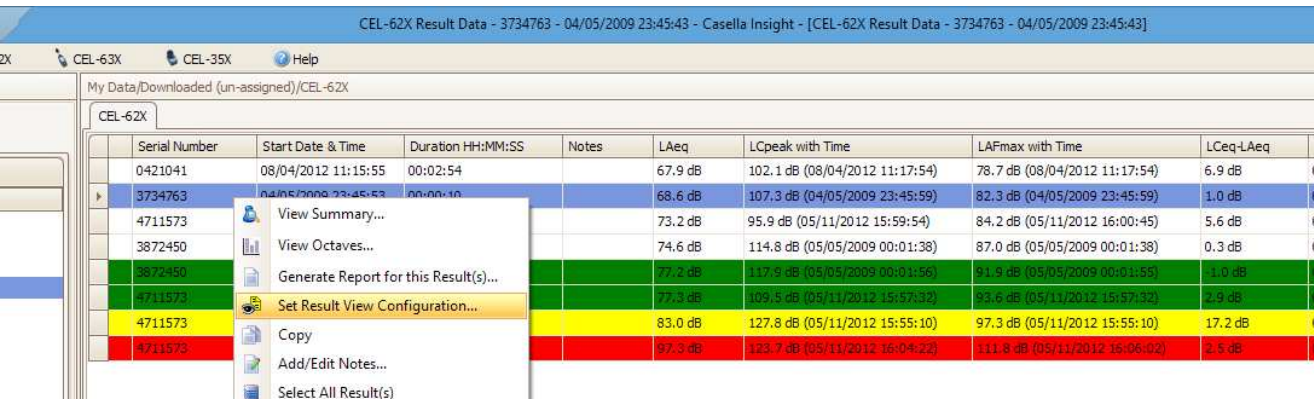
Graphical images

Equally by right clicking over the ‘ Result Data Window ’ in a graphical format you copy the visual image directly into a spreadsheet or word processing document. Simply copy then past into your chosen pre-opened document.

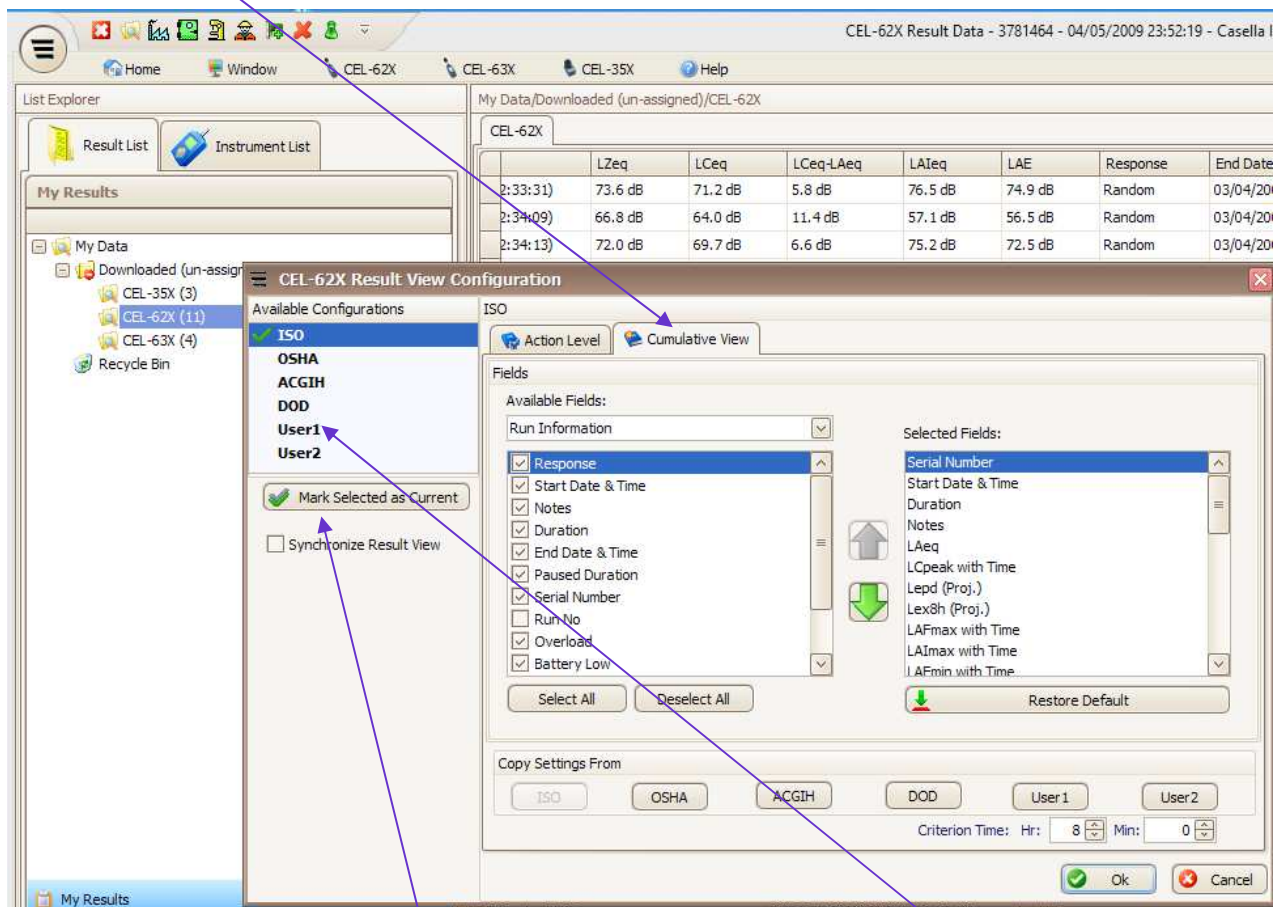


Measurement View Column selection and ordering

The CEL63x instruments and software are designed to be used for different applications worldwide and hence all parameters and weightings are displayed. In order to modify the view for your specific application there are a number of configurations available (some preset and two that are user defined). Right click on the measurements list and you will get a window appearing (as shown below). From this window select “Set Result View Configuration..”



Click on the “Cumulative View” tab from the window that will appear.

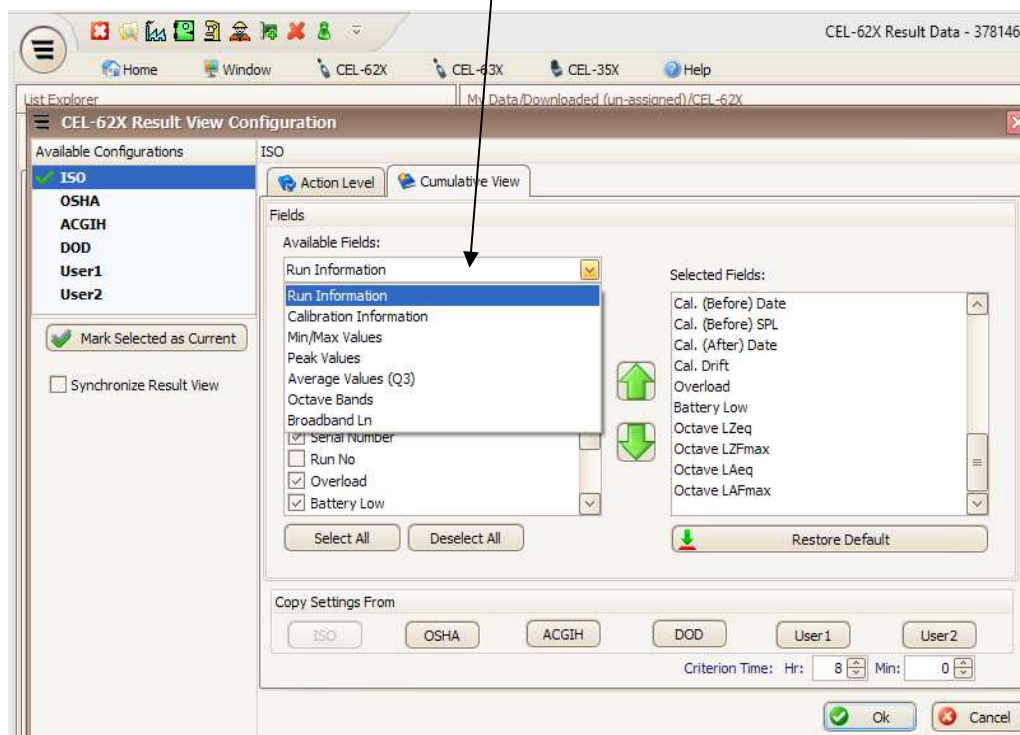


There are a number of “Available Configuration”. It is a good option to set up User 1 for your main activities and User 2 if you have an alternative application (such as environmental noise and noise at work).

Select the configuration and “Mark Selected as Current”.

The right hand side shows all the selected fields that can be ordered by priority. Simply highlight and use the up and down arrows to prioritise. However, before doing this is a good idea to edit the amount of fields first.

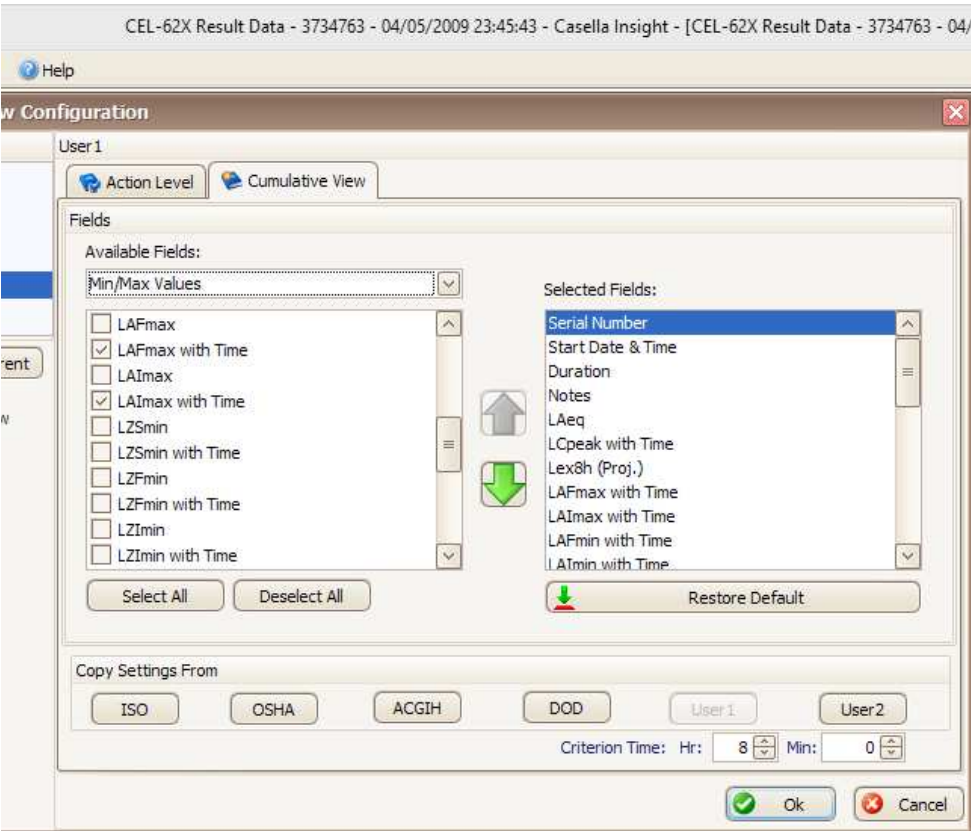
Use the pull down menu to go through the different available fields



The available categories are:

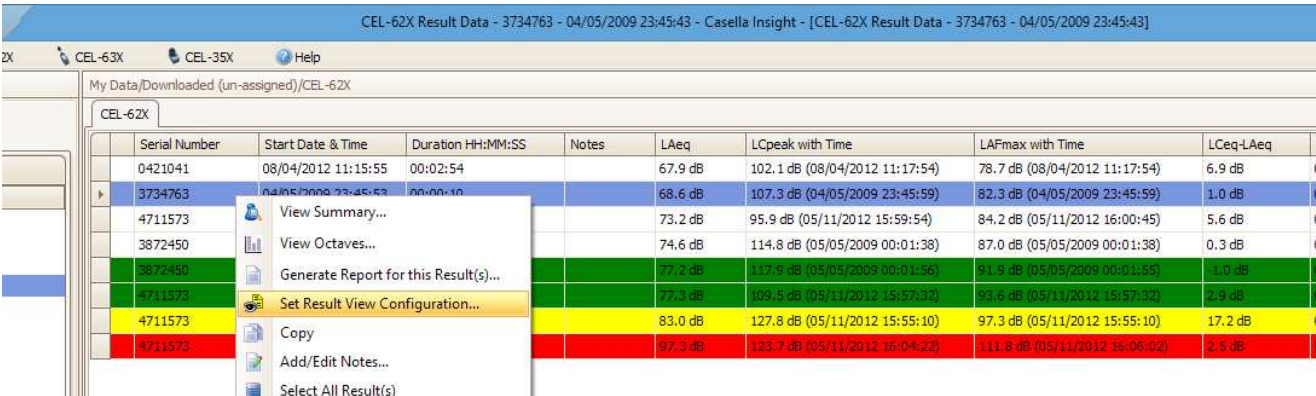
- Run Information
- Calibration Information
- Min/ Max values
- Peak Values
- Average Values
- Settings
- Octave Bands
- Broadband LN

Check or un-check each tick box in the fields window to add or remove parameters. Repeat for each Available Field category and then press OK button at the bottom of the Window.



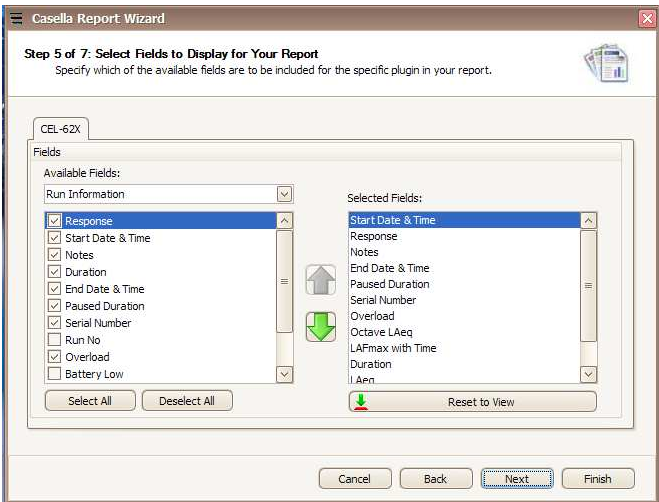
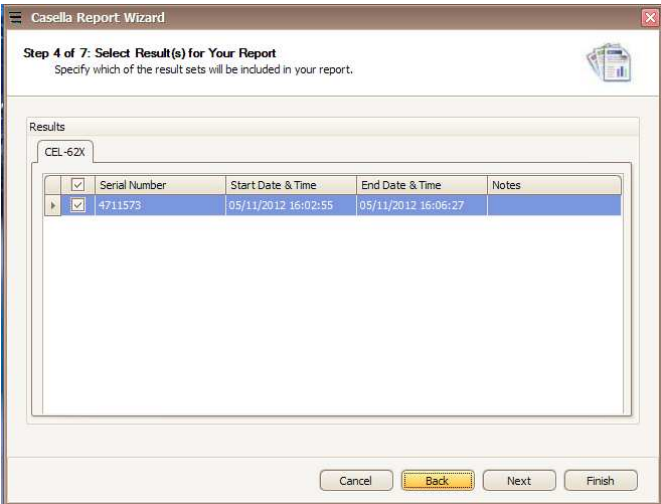
Producing Measurement Reports

To produce a report right click on any measurement or selected measurements and the following window will appear. Select the “ Generate Report for this result (s) option.



Select Results for your reports:

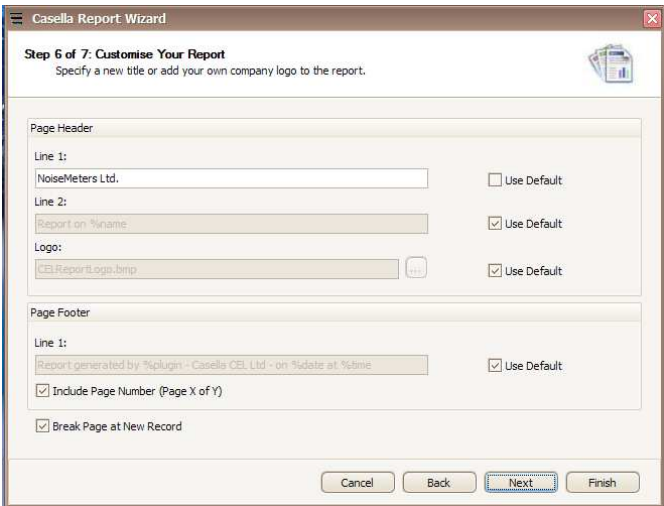
The following window appears so that you can confirm the measurements to be viewed in your report.
Edit accordingly and press Next button.



Select Fields: The following window appears - from here you can edit the parameters that you want to see in your report in a similar way to measurement view.
This configuration will then be saved for subsequent reports until you change it.
Click Next once finished.

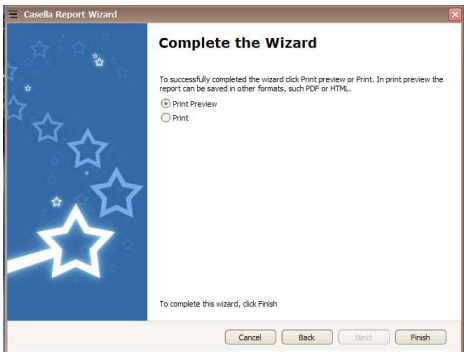
Customise your report:

You can add Page Headers / included page numbers etc.
Press next to continue.

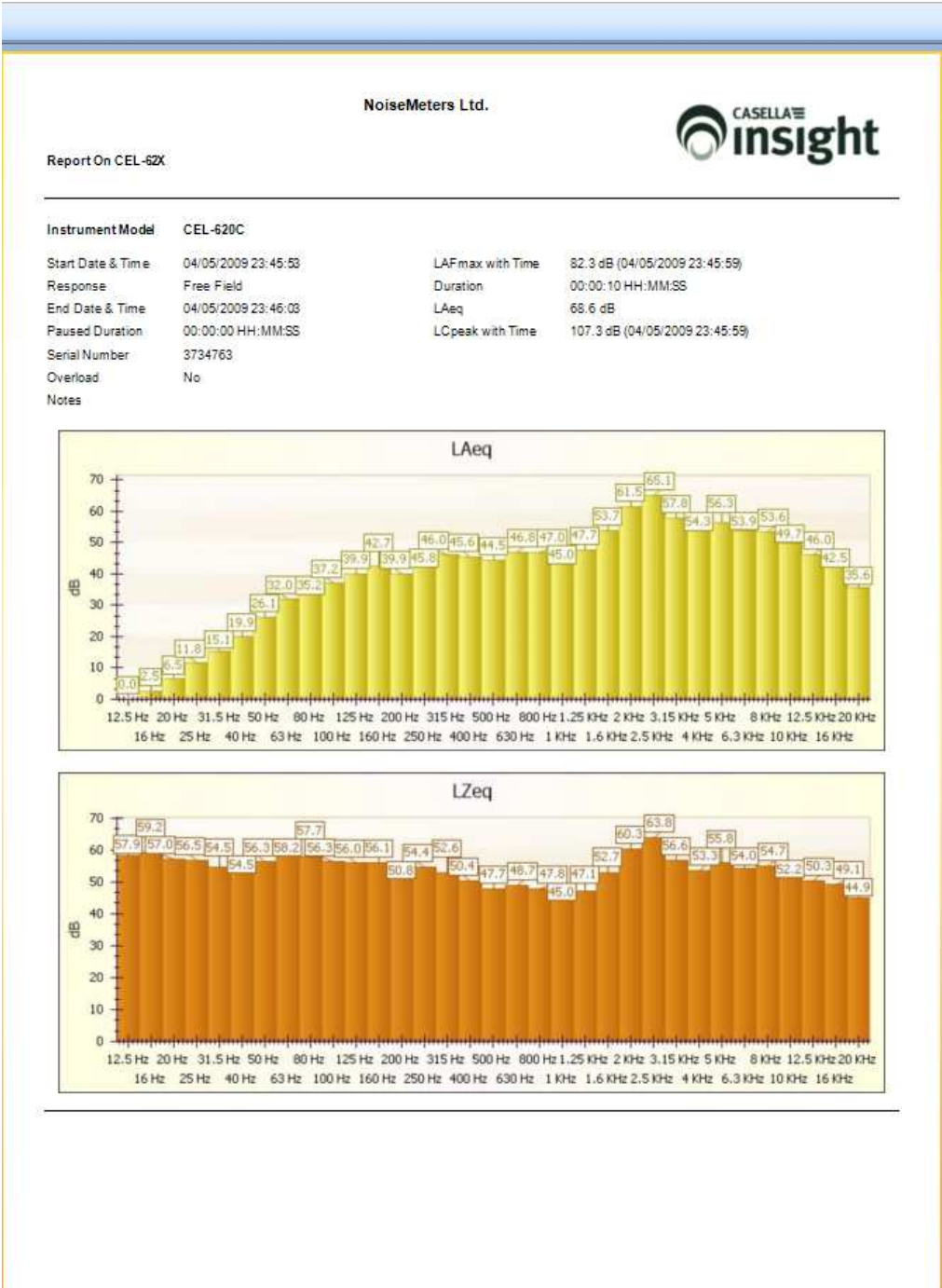


Complete the Wizard:

You can preview your report prior to printing or saving.



Sample 1:3 Octave Report

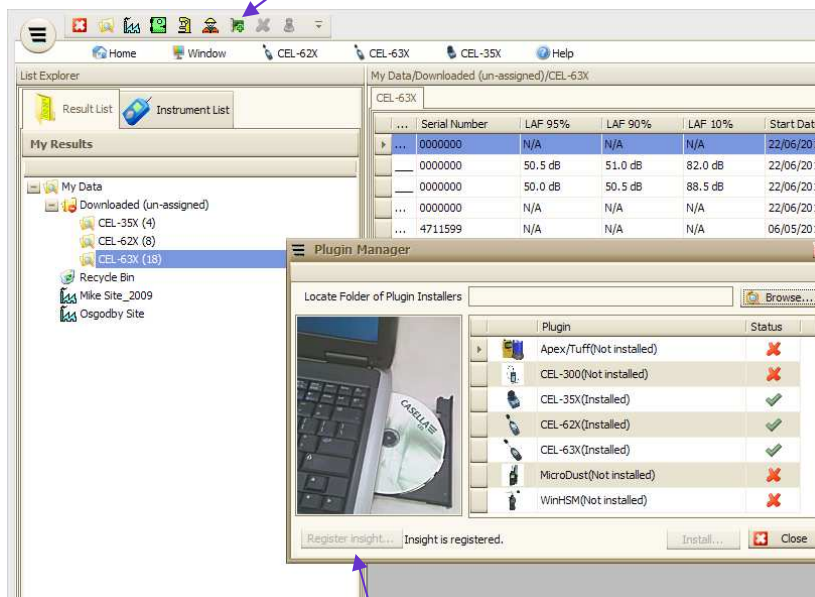


Appendix 1

Activating the fully the Licensed version of Insight

Insight can be used as a trial version for 30 days but once this period is exceeded existing data can be viewed but no further data downloaded from your sound level meter.

Click on the Plugin Manager Icon on the quick access toolbar generated combining multiple instruments simultaneously.



The Plugin Manager window will appear and if you click on the Register Insight button you can enter your license key (usually made up of around 25 characters). In the above screen sheet the software has already been registered and the Register button is greyed out.